

Client \_\_\_\_\_ Quantity \_\_\_\_\_  
 Project \_\_\_\_\_ Position \_\_\_\_\_

## FUN 600

**Model:** F60/30SPE/T

**Cod:** MP01332121000



### Technical data

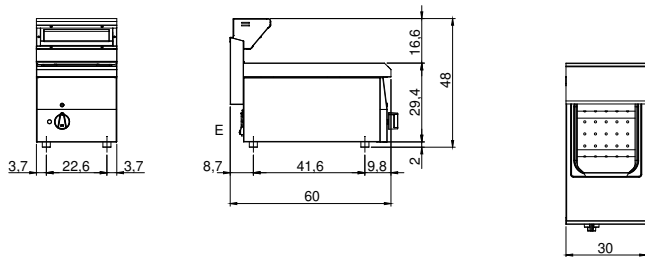
<b>Modularity:</b>	Top
<b>Dimension (mm):</b>	300x600x300
<b>Total electric power (kW):</b>	1
<b>Nr. Wells:</b>	1
<b>Well litres 1:</b>	12,5
<b>Well dimensions 1 (mm):</b>	265x325x150
<b>Electric power (V):</b>	220-240
<b>Ampere (A):</b>	5
<b>Phases:</b>	1
<b>Cable section (mmq):</b>	3G1
<b>Frequency (Hz):</b>	50-60
<b>Net volume (m3):</b>	0,054
<b>Packing dimensions (mm):</b>	376x695x638
<b>Gross weight (kg):</b>	15
<b>Gross volume (m3):</b>	0,167

### Features

<b>Working top:</b>	Made of AISI 304 stainless steel with a thickness of 8/10 mm
<b>Knobs:</b>	Knobs are made from a sturdy heat-resistant polymer blend
<b>Heating:</b>	Infrared ceramic heating elements

Heated chip dump. The top, the bowl and the false bottom are made entirely of AISI 304 stainless steel; covering in AISI 430 stainless steel thickness 8/10; bottoms and internal parts in anti-corrosion material (aluminised sheet metal). Bowl GN 1/2. Top, bowl removable GN ½ h 15 cm. -Food is heated by the ceramic infrared heating elements. The unit is equipped with a main switch and an indicator light that shows proper operation. Total power 1 kW. Electrical power supply V AC 230+1 50÷60 Hz.

### Technical draw



E: Electric power