



Client \_\_\_\_\_ Quantity \_\_\_\_\_  
 Project \_\_\_\_\_ Position \_\_\_\_\_

## FUN 700

**Model:** F70/70FRGV/2V13/P

**Cod:** MP01292113000

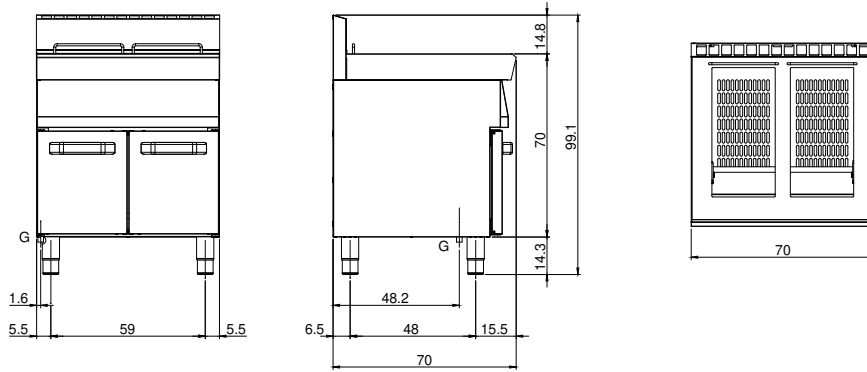
### Technical data

<b>Modularity:</b>	On cabinet with door
<b>Dimension (mm):</b>	700x700x850
<b>Total gas power (Kcal/h):</b>	18917
<b>Total gas power (kW):</b>	22
<b>Nr. Wells:</b>	2
<b>Well litres 1:</b>	13
<b>Well litres 2:</b>	13
<b>Well dimensions 1 (mm):</b>	240x342x343
<b>Well dimensions 2 (mm):</b>	240x342x343
<b>Gas connection:</b>	1/2"
<b>Net volume (m3):</b>	0,417
<b>Packing dimensions (mm):</b>	776x776x1180
<b>Gross weight (kg):</b>	82
<b>Gross volume (m3):</b>	0,711

### Features

<b>Working top:</b>	Made of AISI 304 stainless steel with a thickness of 10/10 mm
<b>Type of heating:</b>	Direct
<b>Knobs:</b>	Knobs are made from a sturdy heat-resistant polymer blend and are equipped with liquid anti-leakage washer
<b>Kit Gas:</b>	Natural gas conversion kit 30/50 m/bar (tested with natural gas G20)

Technical draw



G: Gas connection 1/2"