



Client \_\_\_\_\_ Quantity \_\_\_\_\_

Project \_\_\_\_\_ Position \_\_\_\_\_

## ROC 1100

**Model:** R110/80BMFE/P

**Cod:** MP01575125004

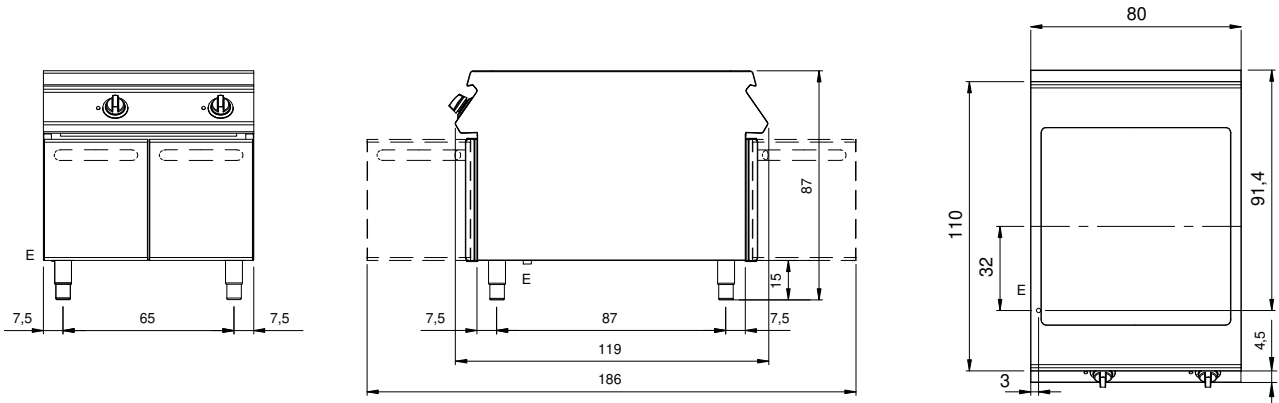
### Technical data

<b>Modularity:</b>	On cabinet with doors
<b>Dimension (mm):</b>	800x1100x870
<b>Total electric power (kW):</b>	13,2
<b>Cooking zone dimensions 1 (LxD mm):</b>	720x750
<b>Nr. Wells:</b>	1
<b>Well litres 1:</b>	40,5
<b>Well dimensions 1 (mm):</b>	720x750x98
<b>Electric power (V):</b>	380-415
<b>Ampere (A):</b>	20,5
<b>Phases:</b>	3N
<b>Cable section (mmq):</b>	5G2,5
<b>Frequency (Hz):</b>	50-60
<b>Net volume (m3):</b>	0,766
<b>Packing dimensions (mm):</b>	880x1272x1274
<b>Gross volume (m3):</b>	1,426

### Features

<b>Working top:</b>	Rrealizzato in acciaio inox AISI 304 spessore 2 mm
<b>Material of plate:</b>	Chrome
<b>Plate finish:</b>	Smooth
<b>Tipologia ribaltamento:</b>	Manual
<b>Knobs:</b>	Made of aluminum with IPX5 water protection
<b>Handles:</b>	The brushed aluminum handles allow for a secure and sturdy grip with a ergonomic lines
<b>Heating:</b>	Armored heating elements positioned under the well

Technical draw



E: Electric power